

## Appendix 1.

### Results for Youth Unemployment Female (YUF) & Youth Unemployment Male (YUM), Poland

**Table 10.**  
*Unit Root Test Results*

Variable	ADF		PP		Stationarity Results
	Level	First Difference	Level	First Difference	
PLYUF	-0.55(1) [0.87]	-5.65(0) [0.00]	-0.74 [0.82]	-5.65 [0.00]	I(1)
PLYUM	-0.61(4) [0.85]	-4.39(3) [0.00]	-1.07 [0.72]	-6.57 [0.00]	I(1)
PLGDP	-2.03(0) [0.04]		-1.91 [0.05]		I(0)
PLINF	-0.78(0) [0.37]	6.35(0) [0.00]	-0.93 [0.30]	-6.34 [0.00]	I(1)
PLTEM	-0.77(4) [0.37]	6.96(0) [0.00]	-1.99 [0.99]	-6.97 [0.00]	I(1)

*Note:* In the ADF test, the optimum lag length was determined according to the Schwarz information criterion. In the PP test, the Bartlett-Kernel method and the bandwidth Newey West Bandwidth method were used. The values in square brackets [...] show p-probability values.

*Source:* Own calculations based on Eurosta Database (2024) and Oecd Database (2024).

**Table 11.**  
*ARDL Cointegration Test Results*

	k	F-Statistic	Critical Values 5%	
			Lower limit I(0)	Upper limit I(1)
PLYUF	3	5.59	3.38	4.23
PLYUM	3	8.25	4.01	5.07

*Source:* Own calculations based on Eurostat Database (2024) and OECD Database (2024).

**Table 12.***ARDL (1, 1, 2, 0) Long Run Form and Bounds Test (PLYUF)*

Variable	Coefficient	Std. Error	t-Statistic	Prob.
C	4.07	2.28	1.78	0.08
PLYUF(-1)	-0.05	0.03	-1.68	0.09
PLGDP(-1)	-0.32	0.07	-4.62	0.00
PLINF(-1)	0.01	0.06	0.19	0.84
PLINF(-2)	0.48	0.19	2.42	0.01
PLTEMP	-0.00	0.00	-0.45	0.64
<b>Long Run Coefficients</b>				
PLGDP	-5.76	3.41	-1.68	0.09
PLINF	0.21	1.07	0.19	0.84
PLTEM	-0.00	0.01	-0.42	0.67

Source: Own calculations based on Eurostat Database (2024) and OECD Database (2024).

**Table 13.***Short Run Form and Error Correction Model (1, 1, 2, 0) (PLYUF)*

Variable	Coefficient	Std. Error	t-Statistic	Prob.
C	4.03	0.79	5.04	0.00
$\Delta$ PLGDP	-0.12	0.06	-1.84	0.07
$\Delta$ PLINF	0.20	0.16	1.23	0.22
$\Delta$ PLINF(-1)	0.48	0.17	2.73	0.00
ECT(-1)	-0.05	0.01	5.47	0.00

Source: Own calculations based on Eurostat Database (2024) and OECD Database (2024).

**Table 14.***ARDL (1, 1, 3, 1) Long Run Form and Bounds Test (PLYUM)*

Variable	Coefficient	Std. Error	t-Statistic	Prob.
C	1.46	2.03	0.71	0.47
PLYUM(-1)	-0.05	0.03	-1.69	0.09
PLGDP(-1)	-0.20	0.05	-3.71	0.00
PLINF(-1)	0.15	0.06	2.41	0.01
PLINF(-2)	0.24	0.15	1.56	0.12

Variable	Coefficient	Std. Error	t-Statistic	Prob.
PLINF(-3)	-0.51	0.17	-2.90	0.05
PLTEM(-1)	0.00	0.00	0.29	0.76
<b>Long Run Coefficients</b>				
PLGDP	-3.77	2.27	-1.66	0.10
PLINF	2.75	1.74	1.57	0.12
PLTEM	0.00	0.00	0.34	0.73

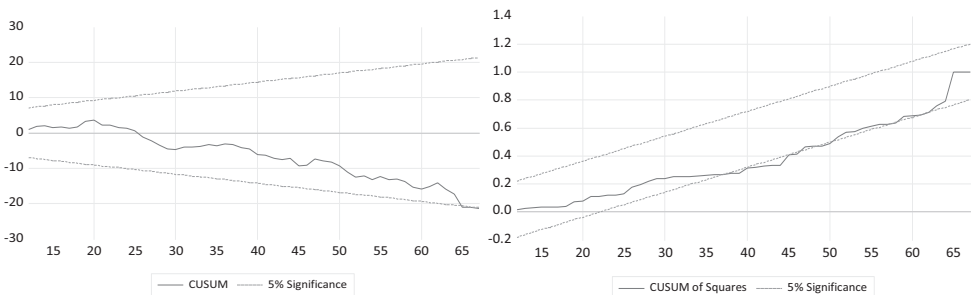
Source: Own calculations based on Eurostat Database (2024) and OECD Database (2024).

**Table 15.**  
*Short Run Form and Error Correction Model (1, 1, 3, 1) (PLYUM)*

Variable	Coefficient	Std. Error	t-Statistic	Prob.
C	1.46	0.33	4.37	0.00
$\Delta$ PLGDP	0.00	0.05	0.17	0.86
$\Delta$ PLINF	0.17	0.13	1.25	0.21
$\Delta$ PLINF(-1)	0.24	0.14	1.67	0.10
$\Delta$ PLINF(-2)	-0.51	0.15	-3.42	0.00
$\Delta$ PLTEM	-0.00	0.00	-1.41	0.16
ECT(-1)	-0.05	0.00	-5.90	0.00

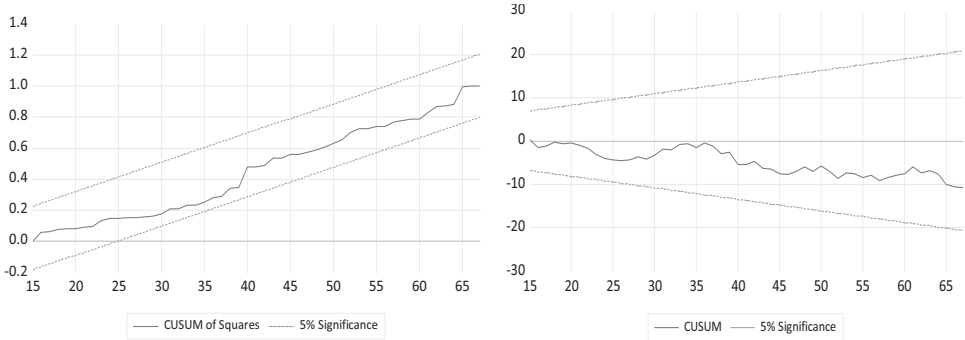
Source: Own calculations based on Eurostat Database (2024) and OECD Database (2024).

**Figure 5.**  
*CUSUM and CUSUM of Squares for PLYUF*



Source: Own calculations based on Eurostat Database (2024) and OECD Database (2024).

**Figure 6.**  
CUSUM and CUSUM of Squares for PLYUM



Source: Own calculations based on Eurostat Database (2024) and OECD Database (2024).

## Appendix 2.

### Results for Youth Unemployment Female (YUF) & Youth Unemployment Male (YUM), Türkiye

**Table 16.**  
Unit Root Test Results

Variable	ADF		PP		Stationarity Results
	Level	First Difference	Level	First Difference	
TRYUF	-1.89(0) [0.33]	-8.31(0) [0.00]	-1.80 [0.37]	-8.31 [0.00]	I(1)
TRYUM	-1.91(0) [0.49]	-7.10(0) [0.00]	-2.20 [0.20]	-7.10 [0.00]	I(1)
TRGDP	-2.03(0) [0.04]		-1.91 [0.05]		I(0)
TRINF	-0.78(0) [0.37]	6.33(0) [0.00]	-0.87 [0.30]	-6.32 [0.00]	I(1)
TRTEM	-0.77(4) [0.37]	6.86(0) [0.00]	-1.99 [0.99]	-6.87 [0.00]	I(1)

Note: In the ADF test, the optimum lag length was determined according to the Schwarz information criterion. In the PP test, the Bartlett-Kernel method and the bandwidth Newey West Bandwidth method were used. The values in square brackets [...] show p-probability values.

Source: Own calculations based on Eurostat Database (2024) and OECD Database (2024).

**Table 17.**  
*ARDL Cointegration Test Results (Türkiye)*

	k	F-Statistic	Critical Values 5%	
			Lower limit I(0)	Upper limit I(1)
TRYUF	3	9.73	4.01	5.07
TRYUM	3	8.08	2.79	3.67

Source: Own calculations based on Eurostat Database (2024) and OECD Database (2024).

**Table 18.**  
*ARDL (1, 1, 2, 1) Long Run Form and Bounds Test (TRYUF)*

Variable	Coefficient	Std. Error	t-Statistic	Prob.
C	9.27	2.12	4.35	0.00
TRYUF(-1)	-0.38	0.08	-4.59	0.00
TRGDP(-1)	-0.19	0.03	-4.98	0.00
TRINF(-1)	-0.06	0.01	-3.91	0.00
TRTEMP(-1)	-0.00	0.00	-1.64	0.10
$\Delta$ TRGDP	-0.12	0.04	2.82	0.00
$\Delta$ TRINF	-0.11	0.03	-3.22	0.00
$\Delta$ TRINF(-1)	0.13	0.03	-3.22	0.00
$\Delta$ TRTEM	-0.00	0.00	-0.42	0.67
<b>Long Run Coefficients</b>				
TRGDP	-0.51	0.13	-3.95	0.00
TRINF	-0.17	0.04	-4.24	0.00
TRTEM	-0.00	0.00	-1.77	0.08

Source: Own calculations based on Eurostat Database (2024) and OECD Database (2024).

**Table 19.**  
*Short Run Form and Error Correction Model (1, 1, 2, 1) (TRYUF)*

Variable	Coefficient	Std. Error	t-Statistic	Prob.
C	9.27	1.43	6.47	0.00
$\Delta$ TRGDP	-0.12	0.03	-3.25	0.00
$\Delta$ TRINF	-0.11	0.03	-3.66	0.00

Variable	Coefficient	Std. Error	t-Statistic	Prob.
$\Delta$ TRINF(-1)	0.13	0.03	4.01	0.00
$\Delta$ TRTEMP	-0.00	0.00	-0.54	0.58
ECT(-1)	-0.38	0.05	-6.40	0.00

Source: Own calculations based on Eurostat Database (2024) and OECD Database (2024).

**Table 20.**

*ARDL (3, 1, 2, 0) Long Run Form and Bounds Test (TRYUM)*

Variable	Coefficient	Std. Error	t-Statistic	Prob.
C	4.71	1.42	3.32	0.00
TRYUM(-1)	-0.22	0.06	-3.74	0.00
TRGDP(-1)	-0.25	0.04	-5.78	0.00
TRINF(-1)	-0.02	0.01	-2.47	0.01
TRTEMP	0.00	0.00	1.21	0.23
$\Delta$ TRYUM(-1)	-0.19	0.12	-1.58	0.11
$\Delta$ TRYUM(-2)	-0.20	0.11	-1.69	0.09
$\Delta$ TRGDP	-0.13	0.03	-3.46	0.00
$\Delta$ TRINF	-0.01	0.02	-0.51	0.60
$\Delta$ TRINF(-1)	0.04	0.02	1.62	0.11
<b>Long Run Coefficients</b>				
TRGDP	-1.13	0.3	-3.54	0.00
TRINF	-0.10	0.05	-2.17	0.03
TRTEM	0.00	0.00	1.11	0.26

Source: Own calculations based on Eurostat Database (2024) and OECD Database (2024).

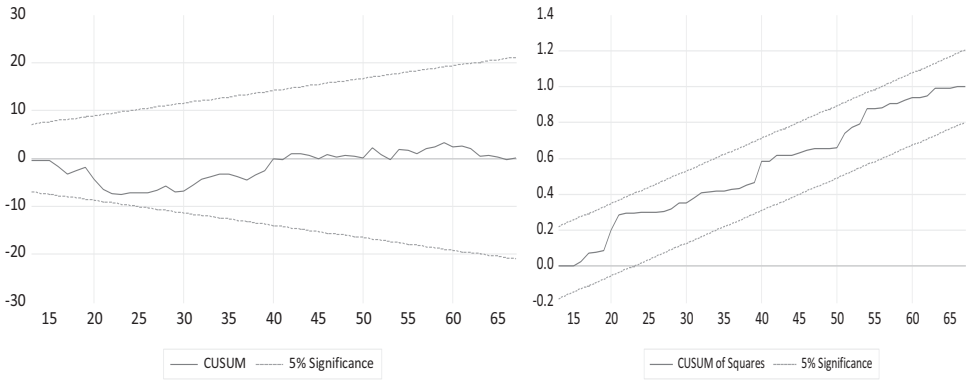
**Table 21.**

*Short Run Form and Error Correction Model (3, 1, 2,0) (TRYUM)*

Variable	Coefficient	Std. Error	t-Statistic	Prob.
$\Delta$ TRYUM(-1)	-0.19	0.10	-1.79	0.07
$\Delta$ TRYUM(-2)	-0.20	0.10	-1.88	0.06
$\Delta$ TRGDP	-0.13	0.03	-3.86	0.00
$\Delta$ TRINF	-0.01	0.02	-0.55	0.58
$\Delta$ TRINF(-1)	0.04	0.02	1.74	0.08
ECT(-1)	-0.22	0.03	-6.59	0.00

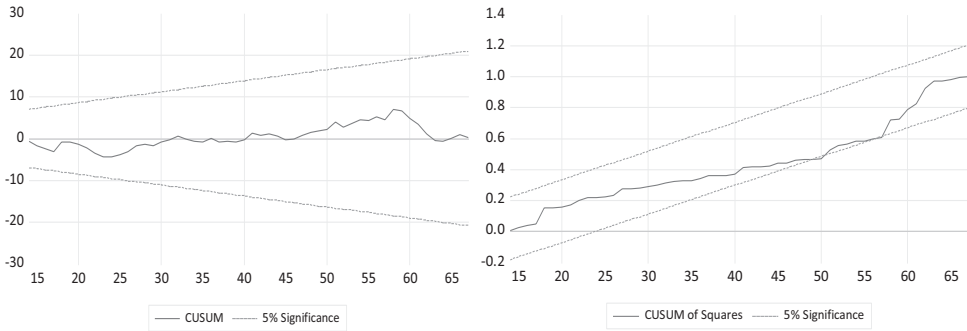
Source: Own calculations based on Eurostat Database (2024) and OECD Database (2024).

**Figure 7.**  
*CUSUM and CUSUM of Squares for TRYUF*



Source: Own calculations based on Eurostat Database (2024) and OECD Database (2024).

**Figure 8.**  
*CUSUM and CUSUM of Squares for TRYUM*



Source: Own calculations based on Eurostat Database (2024) and OECD Database (2024).